

# FOR LEASE



## Indigo Crossing Cabela's Drive & Old San Antonio Rd. Buda | Texas | 78610

- Located directly between Cabela's and Wal-Mart Super Center on Cabela's Drive and Old San Antonio Road in Buda, Texas.
- There are 6 retail pad sites available (all SF is approximate)  
Lot 3: 62,291SF   Lot 4: 55,000 SF   Lot 5b: 25,000 SF  
Lot 6: 40,000 SF   Lot 7: 33,105 SF   Lot 8b: 59,777 SF
- Specific uses include a Restaurant, a Bank, or other retail.
- Ground Lease or Build to Suit.
- Pricing varies. Please call for details.

### Traffic Counts

99,910 vehicles per day (IH-35 North of Loop 4)  
84,000 vehicles per day (IH-35 South of Loop 4)  
12,463 vehicles per day (Loop4 West of IH-35)

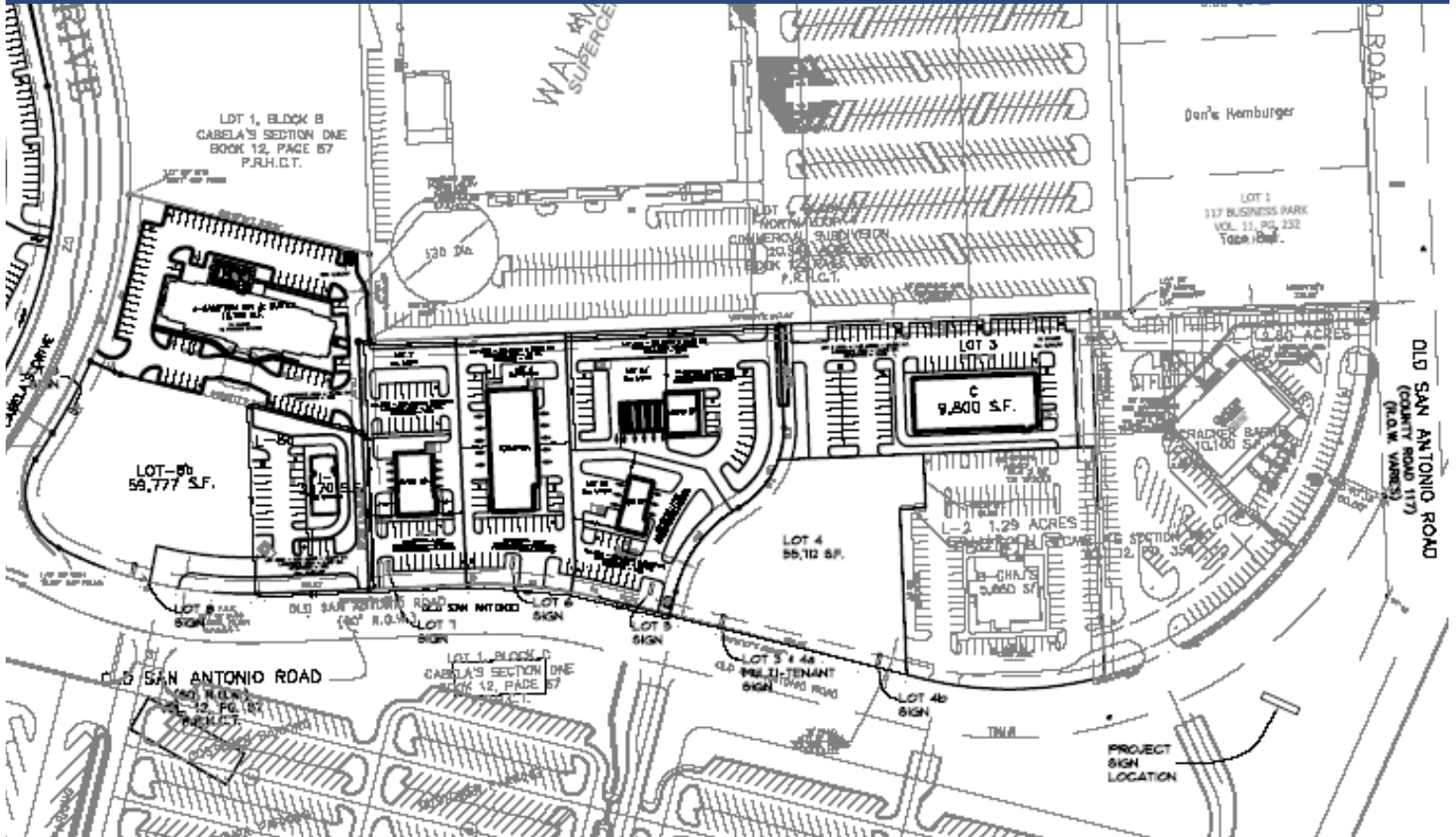
**DON  
QUICK**  
& associates, inc.

Contact  
Brent Campbell, Realtor®  
Charles Harvey, Realtor®  
512.255.3000  
info@donquick.com

1000 N. IH-35, Suite A | Round Rock | TX | 78681  
Phone 512.255.3000      www.DonQuick.com

The material contained in this memorandum is based in part upon information furnished to Don Quick & Associates, Inc. by sources deemed to be reliable. The information is believed to be accurate in all material respects, but no representation or warranty, expressed or implied, as to list accuracy or completeness is made by any party. Nothing contained herein should be relied upon as a promise or representation as to the future. Recipients should conduct their own investigation and analysis of the information described herein.





## Join These Area Retailers



### Contact

Brent Campbell, Realtor®  
 Charles Harvey, Realtor®  
 512.255.3000  
 info@donquick.com

1000 N. IH-35, Suite A | Round Rock | TX | 78681  
 Phone 512.255.3000      www.DonQuick.com

The material contained in this memorandum is based in part upon information furnished to Don Quick & Associates, Inc. by sources deemed to be reliable. The information is believed to be accurate in all material respects, but no representation or warranty, expressed or implied, as to list accuracy or completeness is made by any party. Nothing contained herein should be relied upon as a promise or representation as to the future. Recipients should conduct their own investigation and analysis of the information described herein.

